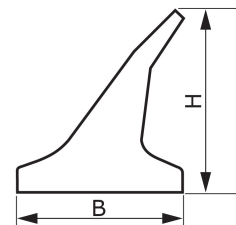
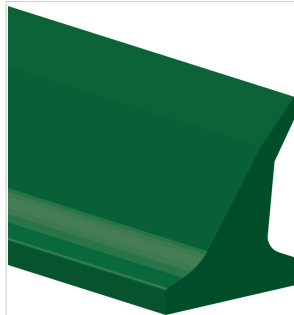


CODE ES76
TYPE
L30 RF
DESCRIPTION

PVC inclined lateral profile, flat base without groove.


TECHNICAL SPECIFICATIONS

Material Polyvinyl chloride (PVC)

Hardness 60 ±5 Sh.A

Colour Green

Base Flat

B Upper base 20 mm 0.79 in.

b Bottom base --- mm --- in.

H Height 30 mm 1.18 in.

Weight 298 gr/m 0.265 oz/in.

Minimum pitch

■ longitudinal --- mm --- in.

■ transversal 50 mm 2.0 in.

 Minimum pulley diameters⁽¹⁾

■ longitudinal-driving side --- mm --- in.

■ longitudinal-conveying side --- mm --- in.

■ transversal-conveying side 80 mm 3.2 in.

⁽¹⁾ Minimum pulley diameters referred to environment conditions of 20°C

 Temperature resistance⁽²⁾ min. -10 °C 14 °F

max. 60 °C 140 °F

⁽²⁾ Use with limit values may reduce its life

Roll/bar sizes 2.4 m 7.9 ft

COMPLIANCES

REACH EC 1907/2006 Regulation and Amendments

METHOD OF APPLICATION

- Hot air welding
- High frequency welding

NOTES

Issue 22-01-2020

Last Update: 22-01-2020

DISCLAIMER

The information contained in this document describes the features of the CHIORINO product as tested in a laboratory environment at a temperature of +23 degrees °C at 50% relative humidity. It does not necessarily reflect the conditions of industrial use and it does not guarantee the product to be suitable for certain applications. The client remains liable for the proper selection and correct use of the CHIORINO product. CHIORINO cannot be held responsible should damages arise from the use of its products. Necessary alterations to this data can be made without prior notice.