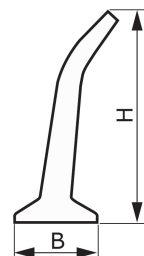
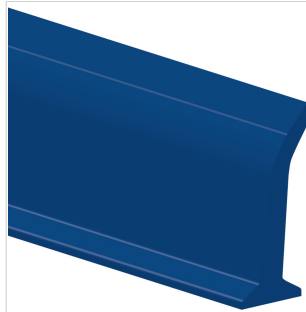


CODE ES538
TYPE
L80 U HP blue
DESCRIPTION

PU HP®, hardness 70 Sh.A, inclined lateral profile with highly flexible.

PRODUCT SYSTEM 


TECHNICAL SPECIFICATIONS

Material Polyurethane (TPU) - HP® system

Hardness 70 ±5 Sh.A

Colour HP® blue

Base Flat

B Upper base 10 mm 0.39 in.

b Bottom base --- mm --- in.

H Height 80 mm 3.15 in.

Weight 354 gr/m 0.315 oz/in.

Minimum pitch

■ longitudinal --- mm --- in.

■ transversal 40 mm 1.6 in.

Minimum pulley diameters⁽¹⁾

■ longitudinal-driving side --- mm --- in.

■ longitudinal-conveying side --- mm --- in.

■ transversal-conveying side 40 mm 1.6 in.

⁽¹⁾ Minimum pulley diameters referred to environment conditions of 20°C

Temperature resistance ⁽²⁾ min. -30 °C -22 °F

max 70 °C 158 °F

⁽²⁾ Use with limit values may reduce its life

Roll/bar sizes 2.4 m 7.9 ft

COMPLIANCES

REACH EC 1907/2006 Regulation and Amendments
 EC 1935/2004 Regulation and Amendments
 EC 2023/2006 Regulation and Amendments
 EU 10/2011, 2017/752 Regulation and Amendments
 HACCP (Hazard Analysis and Critical Control Points)
 FDA (Food and Drug Administration)
 HALAL (World Halal Authority)


METHOD OF APPLICATION
NOTES

Issue 22-01-2020

Last Update: 22-01-2020

DISCLAIMER

The information contained in this document describes the features of the CHIORINO product as tested in a laboratory environment at a temperature of +23 degrees °C at 50% relative humidity. It does not necessarily reflect the conditions of industrial use and it does not guarantee the product to be suitable for certain applications. The client remains liable for the proper selection and correct use of the CHIORINO product. CHIORINO cannot be held responsible should damages arise from the use of its products. Necessary alterations to this data can be made without prior notice.